

## Inland Track, Abel Tasman National Park

The track begins from Marahau on the coast track to Tinline Bay, before turning uphill, towards Castle Rocks Hut. The track is steadily benched and climbs through regenerating forest with views of Marahau and Motuareronui/Adele Island.

Two hours before the hut, reach the Holyoake Clearing and a two bunk shelter overlooking Nelson Bay. From here, the bush changes from regenerating manuka to mature beech, mixed with big shady rimu and miro.

Castle Rocks Hut is nestled in a little clearing 5-6 hours from Marahau.

The Castle Rocks themselves, several granite outcrops, are hidden in scrubby bush 350m and a steep gully away from the hut. Getting onto them involves some scrambling through gorse, but the views look across Nelson Bay to the Richmond Ranges.

Day two, to Awapoto Hut, starts with a two hour climb to Moa Park, a red tussock clearing crammed with more than 200 alpine and subalpine plant species.

Carry on, past a turn-off to Canaan Road, and follow the long, gently undulating Evans Ridge to Awapoto Hut. According to various track notes, the Inland Track ends at Pigeon Saddle, where the road crosses to Totaranui, or at Wainui, but a trip to Whariwharangi, is worthwhile.

A water taxi can be caught from Totaranui back to Marahau.

### Wild file

**Access** From Marahau

**Grade** Moderate

**Time** Marahau to Castle Rocks Hut, 5-6hr; To Awapoto Hut, 6hr; To Pigeon Saddle (Totaranui Road), 3hr; Yo Whariwharangi Hut, 2.5hr

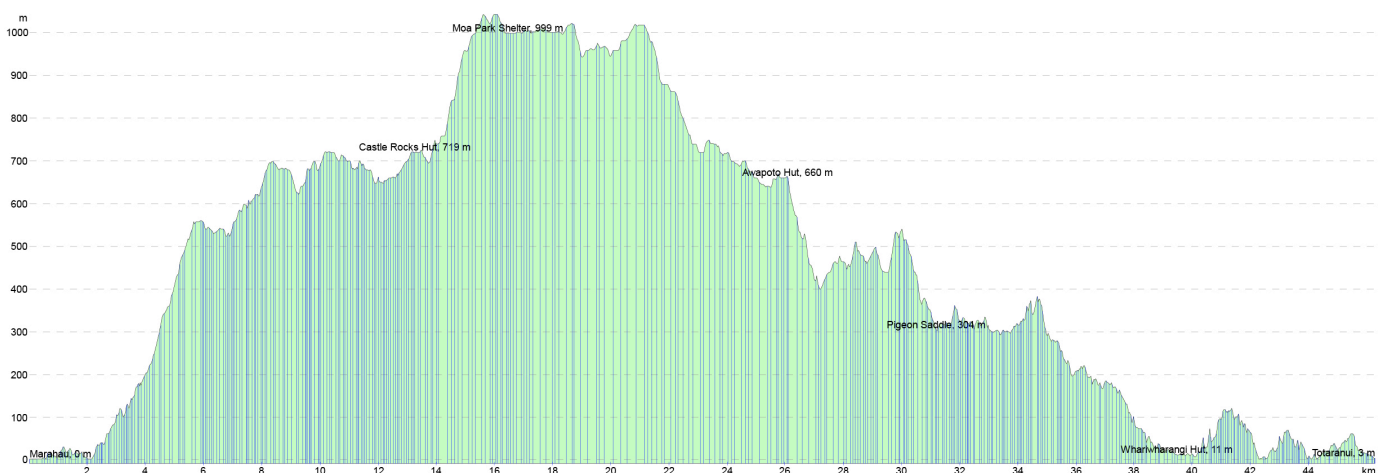
**Distance** To come from AI

**Total ascent** To come from AI

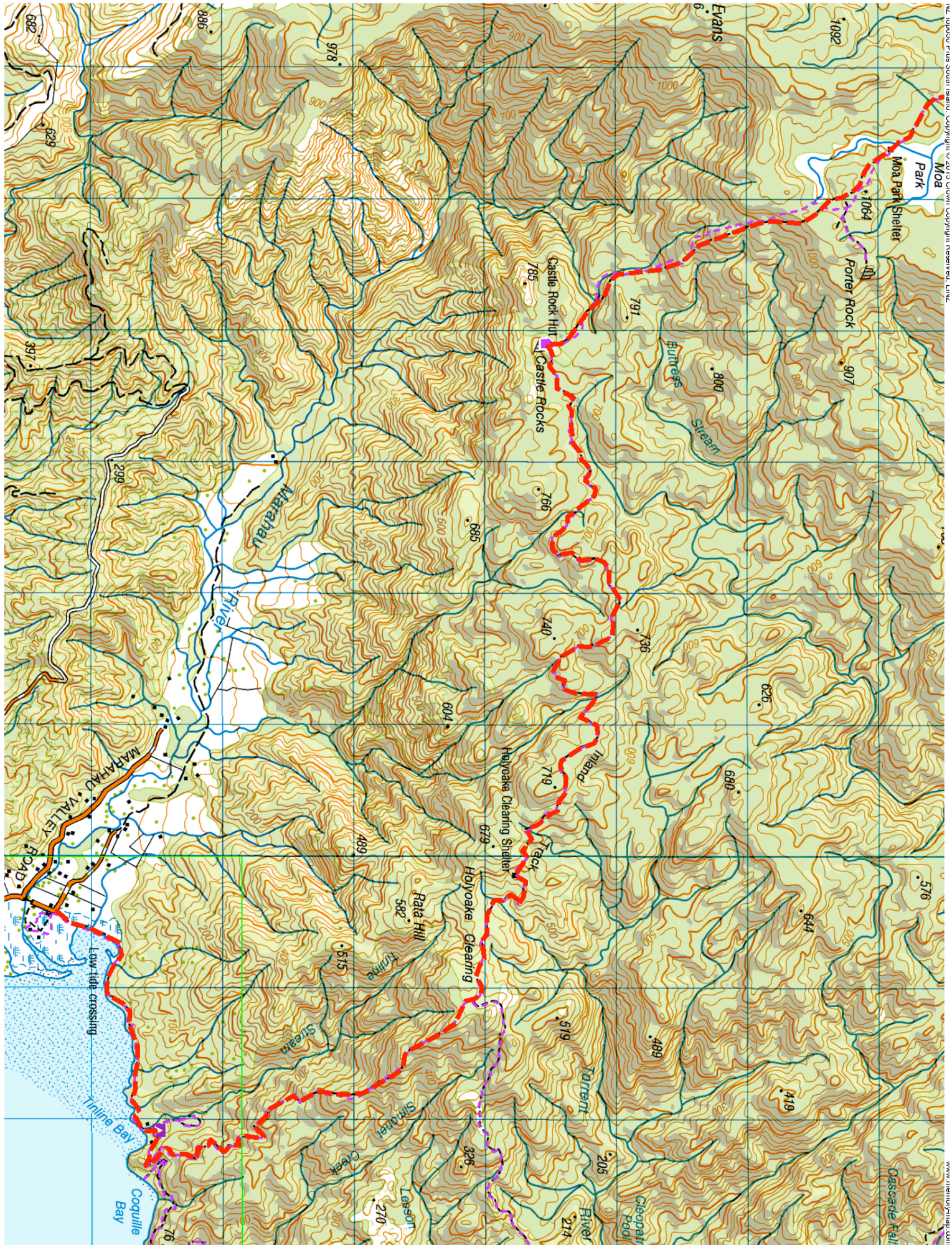
**Accommodation** Castle Rocks Hut (\$5, eight bunks), Awapoto Hut (\$5, 12 bunks), Whariwharangi Hut (\$38, 20 bunks)

**Map** BN25, BP25

### Elevation Profile



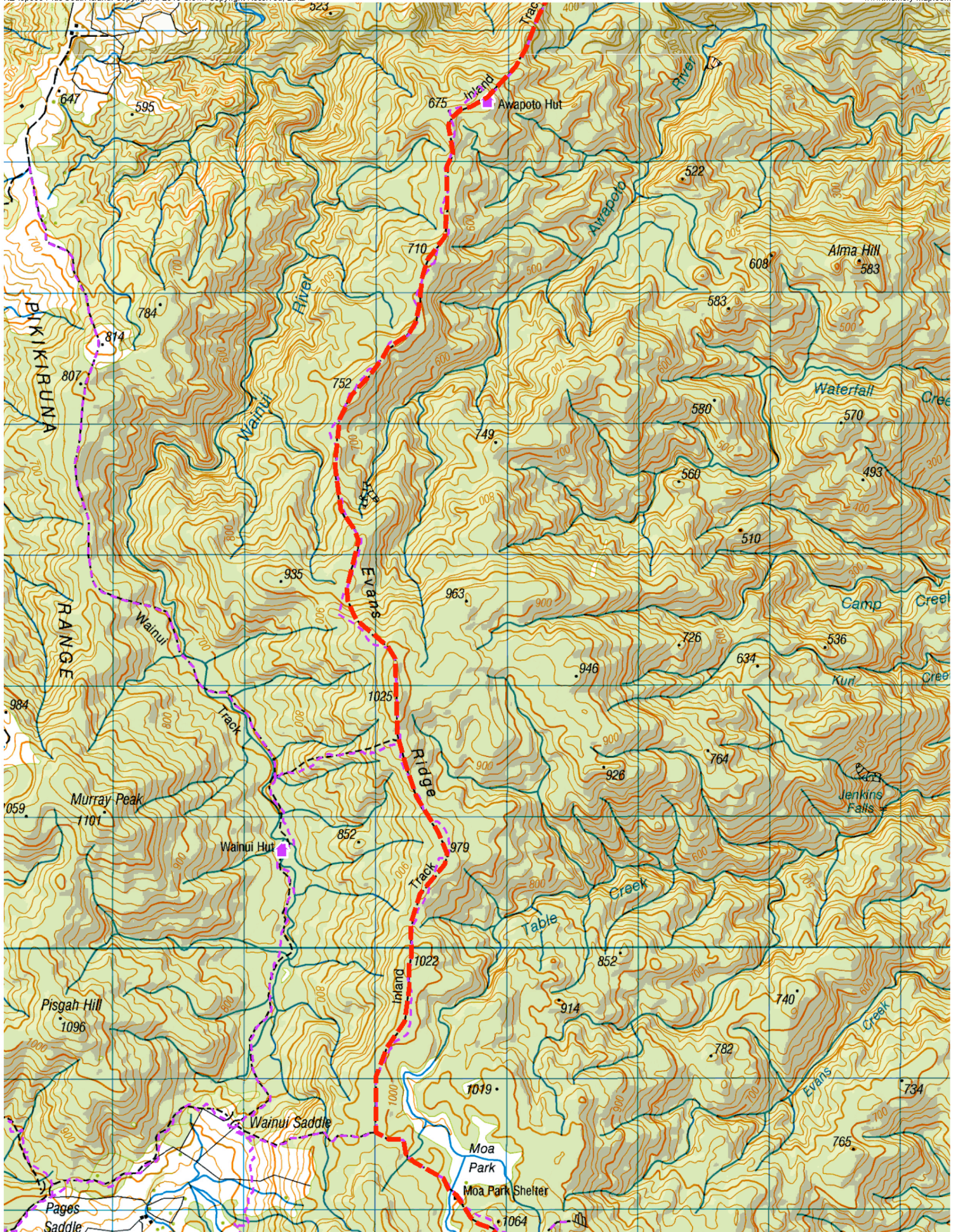
# Inland Track, Abel Tasman National Park. Map 1



# Inland Track, Abel Tasman National Park. Map 2

NZ Topo50 Plus South Island. Copyright © 2015 Crown Copyright Reserved. LINZ

www.memory-map.com



# Inland Track, Abel Tasman National Park. Map 3

NZ Topo50 Plus South Island. Copyright © 2015 Crown Copyright Reserved, LINZ

www.memory-map.com

