

Earnslaw Burn Valley, Mt Aspiring National Park

WILD FILE

Access On Glenorchy Paradise Road turn right into Lovers Leap Road. Earnslaw Burn track starts on the left

Grade Moderate

Distance 11.7km

Time 5-7hr one way

Map CB10, CA10

Description

Words and pictures can't do justice to the majestic view at the end of the valley, where Mt Earnslaw towers nearly 2000m above and feeds dozens of waterfalls.

The walk up the valley is technically easy, but physically challenging with overnight packs. The first few hours of travel lead through dense bush on a well-marked and, for most parts, easily visible trail. Climbing over toppled trees keeps you engaged until the tree line at Rock Bivouac.

The last 5km are through a beautiful, open valley. There is a faint trail in places but for most part trampers are left to their own devices. The last section, through some low scrub, is marked with the occasional cairn.

The ragged rock features and towering cliffs with their myriads of waterfalls would be a worthy destination in their own right. But the grand prize is waiting at the end of the valley. With every corner rounded, the glaciers and waterfalls of Mt Earnslaw are exposed a little more.

Elevation Profile



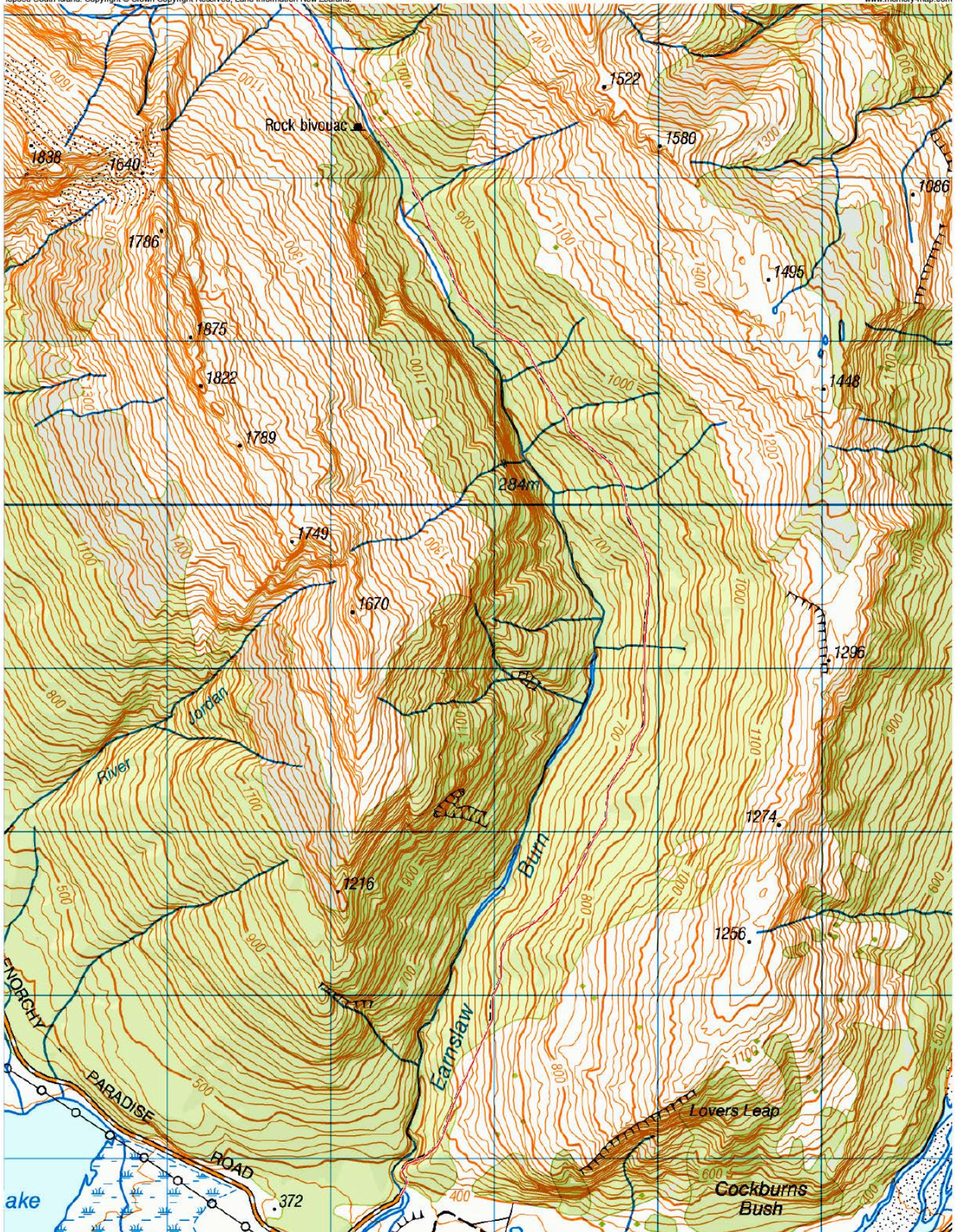
© Wilderness Magazine, www.wildernessmag.co.nz

Disclaimer: While every effort has been made to map this route correctly, Wilderness Magazine does not take responsibility for any errors in the route. Users should use discretion when planning their routes and gather as much information as possible before departing.

Earnslaw Burn Valley, Mt Aspiring National Park. Map 1

Topo50 South Island. Copyright © Crown Copyright Reserved, Land Information New Zealand.

www.memory-map.com



Earnslaw Burn Valley, Mt Aspiring National Park. Map 2

Topo50 South Island. Copyright © Crown Copyright Reserved, Land Information New Zealand.

www.memory-map.com

